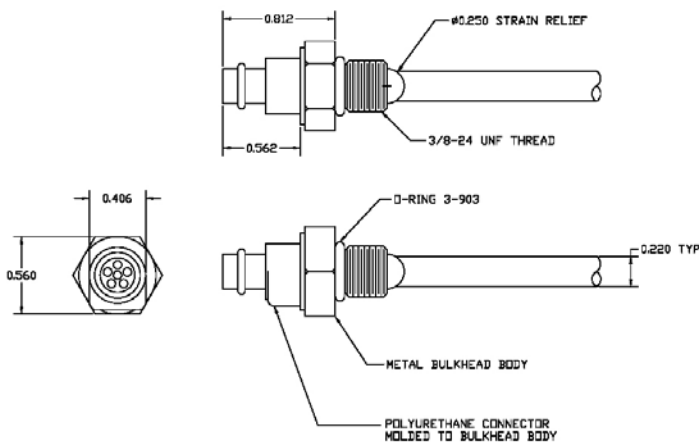


# PSI Series 155

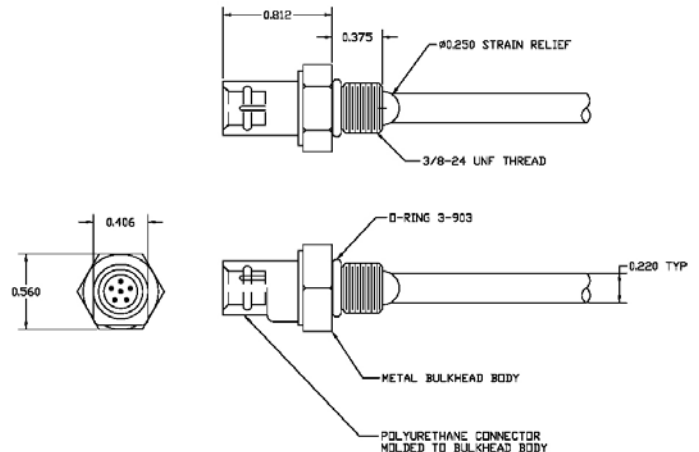
## Submersible Miniature Connectors

PSI Series 155 miniature connectors are fabricated with amber or black polyurethane and Aluminum, Titanium, or Stainless Steel shells. The Series 155 bulkhead connector is fully compatible with our 124 Series in-line connectors. The Series 155 is available in male or female form with six or seven contacts. The standard Series 155 bulkhead connector is molded to a twelve-inch pigtail using 24 AWG PVC coated stranded wire with a polyurethane outer jacket. For special orders, wire size may vary from 22 AWG to 28 AWG.

Series 155 Female Bulkhead Connector



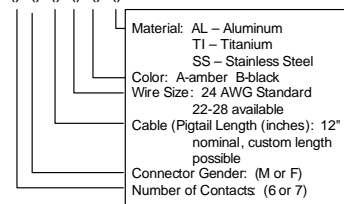
Series 155 Male Bulkhead Connector (shown with compatible series 124F)



Material	Polyurethane
Operating Pressure (max)	1,000 psi
Operating Temperature	-40°F to +150°F
Electrical (per conductor)	600 V, 1 A

Ordering Information

P/N: 155-( )-( )-( )-( )-( )



**For more information or ordering contact:**  
 Paul Skaggs, Planning Systems Incorporated  
 21294 Johnson Road, Long Beach Industrial Park  
 Long Beach, MS 39560-9702  
 Sales@psilongbeach.com  
 Tel. (228) 863-0007 ext 102, Fax: (228) 863-0281